

# Non – tension compression joints LMW type

## FEATURES & BENEFITS



-



-



-



-

## MECHANICAL DATA

Material	Cu
Surface	uncoated

## ELECTRICAL DATA

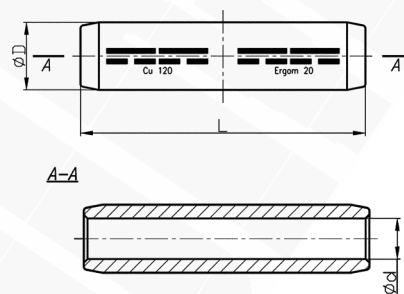
Voltage [kV]	up to 36
--------------	----------

## CERTIFICATES & STANDARDS

Release	DIN 46267 part 1 – concern only the tubular part of terminal
---------	--

## NOTE!

Sector shaped conductors (sm) must be rounded with special dies.



Type	Index Ergom	Cross section mm <sup>2</sup>	d	D	L	Die code No.	Lz/s	Lz/w	Available packages [szt.]	Weights [kg]
LMW 16	E11KM-02080100100	16	5,5	8,5	50	9	1 - 1	2 - 2	1	0.015
LMW 16 (10 SZT./PCS)	E11KM-02080100102								10	0.15
LMW 25	E11KM-02080100200	25	7,0	10	50	10	1 - 1	2 - 2	1	0.02
LMW 25 (10 SZT./PCS)	E11KM-02080100202								10	0.2
LMW 35	E11KM-02080100300	35	8,2	12,5	50	12	1 - 1	2 - 2	1	0.03
LMW 35 (10 SZT./PCS)	E11KM-02080100302								10	3
LMW 50	E11KM-02080100400	50	10,0	14,5	65	14	1 - 1	3 - 3	1	0.05
LMW 50 (10 SZT./PCS)	E11KM-02080100402								10	0.5
LMW 70	E11KM-02080100500	70	11,5	16,5	65	16	1 - 1	3 - 3	1	0.06
LMW 70 (10 SZT./PCS)	E11KM-02080100502								10	0.6
LMW 95	E11KM-02080100600	95	13,5	19,0	90	19	2 - 2	4 - 4	1	0.11
LMW 95 (10 SZT./PCS)	E11KM-02080100602								10	1.1
LMW 120	E11KM-02080100700	120	15,5	21,0	90	20	2 - 2	4 - 4	1	0.12
LMW 120 (10 SZT./PCS)	E11KM-02080100702								10	1.2
LMW 150	E11KM-02080100800	150	17,0	23,5	106	22	2 - 2	4 - 4	1	0.19
LMW 150 (10 SZT./PCS)	E11KM-02080100802								10	1.9
LMW 185	E11KM-02080100900	185	19,0	25,5	106	25	2 - 2	4 - 4	1	0.2
LMW 185 (10 SZT./PCS)	E11KM-02080100902								10	2
LMW 240	E11KM-02080101000	240	21,5	29,0	110	28	2 - 2	4 - 4	1	0.29
LMW 240 (10 SZT./PCS)	E11KM-02080101002								10	2.9
LMW 300	E11KM-02080101100	300	24,0	32,0	116	32	2 - 2	-	1	0.34
LMW 300 (10 SZT./PCS)	E11KM-02080101102								10	3.4
LMW 400	E11KM-02080101200	400	27,5	38,5	160	38	3 - 3	-	1	0.89
LMW 400 (10 SZT./PCS)	E11KM-02080101202								10	8.9

Type	Index Ergom	Cross section mm <sup>2</sup> [mm <sup>2</sup> ]	d	D	L	Die code No.	Lz/s	Lz/w	Available packages [szt.]	Weights [kg]
<b>LMW 500</b>	E11KM-02080101300	500	31,0	42,0	175	42	3 - 3	-	1	0.98
<b>LMW 500 (10 SZT./PCS)</b>	E11KM-02080101302								10	9.8
<b>LMW 625</b>	E11KM-02080101400	625	34,5	44,0	190	44	3 - 3	-	1	0.99
<b>LMW 625 (10 SZT./PCS)</b>	E11KM-02080101402								10	9.9

Lz/s - No. of crimping wide Lz/w - No. of crimping narrow