

Butt connectors join in „butt” KL type

FEATURES & BENEFITS



-



-



-

MECHANICAL DATA

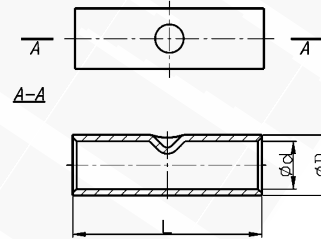
Material	Cu
Surface	tin-plated

CERTIFICATES & STANDARDS

Release	standard
---------	----------

NOTE!

Sector shaped conductors (sm) must be rounded with special dies.



Type	Index Ergom	Cross section mm ²	d	D	L	Die code No.	Lz/s	Lz/w	Available packages [pcs]	Weights [kg]
KL 10 (100 SZT./PCS)	E11KM-01060200100	10	4,5	7,0	30	7	1 - 1	1 - 1	100	0.6
KL 10 (10 SZT./PCS)	E11KM-01060200102								10	0.1
KL 16 (100 SZT./PCS)	E11KM-01060200200	16	5,5	8,5	30	9	1 - 1	1 - 1	100	0.9
KL 16 (10 SZT./PCS)	E11KM-01060200202								10	0.1
KL 25 (100 SZT./PCS)	E11KM-01060200300	25	7,0	10,0	38	10	1 - 1	2 - 2	100	1.3
KL 25 (10 SZT./PCS)	E11KM-01060200302								10	0.2
KL 35 (100 SZT./PCS)	E11KM-01060200400	35	8,5	12,0	42	12	1 - 1	2 - 2	100	2.1
KL 35 (10 SZT./PCS)	E11KM-01060200402								10	0.3
KL 50 (100 SZT./PCS)	E11KM-01060200500	50	10,0	14,0	48	14	1 - 1	2 - 2	100	3.2
KL 50 (10 SZT./PCS)	E11KM-01060200502								10	0.4
KL 70 (100 SZT./PCS)	E11KM-01060200600	70	12,0	16,5	52	16	1 - 1	3 - 3	100	4.6
KL 70 (10 SZT./PCS)	E11KM-01060200602								10	0.5
KL 95 (50 SZT./PCS)	E11KM-01060200700	95	13,5	18,0	58	17	1 - 1	3 - 3	50	2.8
KL 95 (10 SZT./PCS)	E11KM-01060200702								10	0.6
KL 120 (50 SZT./PCS)	E11KM-01060200800	120	15,0	19,5	62	19	1 - 1	3 - 3	50	3.3
KL 120 (10 SZT./PCS)	E11KM-01060200802								10	0.7
KL 150 (50 SZT./PCS)	E11KM-01060200900	150	16,5	21,0	68	20	2 - 2	4 - 4	50	4
KL 150 (10 SZT./PCS)	E11KM-01060200902								10	0.8
KL 185 (50 SZT./PCS)	E11KM-01060201000	185	19,0	24,0	72	23	2 - 2	4 - 4	50	5.4
KL 185 (10 SZT./PCS)	E11KM-01060201002								10	1.1
KL 240 (50 SZT./PCS)	E11KM-01060201100	240	21,0	26,0	88	25	2 - 2	5 - 5	50	7.1
KL 240 (10 SZT./PCS)	E11KM-01060201102								10	1.5
KL 300 (25 SZT./PCS)	E11KM-01060201200	300	24,0	30,0	102	28	2 - 2	-	25	5.7
KL 300 (10 SZT./PCS)	E11KM-01060201202								10	1.2
KL 400 (25 SZT./PCS)	E11KM-01060201300	400	27,5	33,5	112	32	2 - 2	-	25	7.4
KL 400	E11KM-01060201302								1	1.5
KL 500 (25 SZT./PCS)	E11KM-01060201400	500	31,0	38,0	140	34	2 - 2	-	25	12.7
KL 500	E11KM-01060201402								1	0.5
KL 625 (25 SZT./PCS)	E11KM-01060201500	625	34,0	40,0	160	36	3 - 3	-	25	12.5
KL 625	E11KM-01060201502								1	0.5

Lz/s - No. of crimping wide Lz/w - No. of crimping narrow