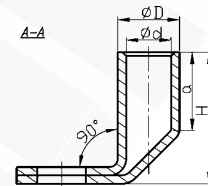
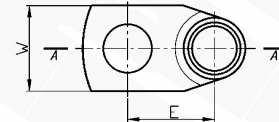


Tubular angle terminals K90D type

FEATURES & BENEFITS

- końcówka oczkowa Cu, część zaciskana w/g DIN, z pokryciem galwanicznym cyną i podejściem do zacisku pod kątem 90 stopni
- opis przekroju przewodu, rozmiar zacisku oraz nr matrycy zaciskowej na powierzchni części zaciskanej
- bardzo szeroki asortyment



MECHANICAL DATA

Material	Cu
Surface	tin-plated

CERTIFICATES & STANDARDS

Design	DIN 46235 – concern only the tubular part of terminal
--------	---

NOTE!

Sector shaped conductors (sm) must be rounded with special dies.

Type	Index Ergom	Cross section mm ²	d	D	a	E	W	H	Size of bolt dia	Die code No.	Lz/s	Lz/w	Quantity in package [pcs]	Weight [kg]
K90D 10/5 (100 PCS)	E11KM-02030100100	10	4,5	6,0	10	13	9	14	M5	6	-	1	100	0.5
K90D 10/5 (10 PCS)	E11KM-02030100102								10				0.05	
K90D 10/6 (100 PCS)	E11KM-02030100200								100				0.4	
K90D 10/6 (10 PCS)	E11KM-02030100202					10	0.04							
K90D 10/8 (100 PCS)	E11KM-02030100300					100	0.4							
K90D 10/8 (10 PCS)	E11KM-02030100302					10	0.04							
K90D 16/6 (100 PCS)	E11KM-02030100500	16	5,5	8,5	20	12	13	14	M6	8	1	2	100	1.3
K90D 16/6 (10 PCS)	E11KM-02030100502								10				0.13	
K90D 16/8 (100 PCS)	E11KM-02030100600								100				1.3	
K90D 16/8 (10 PCS)	E11KM-02030100602					10	0.13							
K90D 16/10 (100 PCS)	E11KM-02030100700					100	1.4							
K90D 16/10 (10 PCS)	E11KM-02030100702					10	0.17							
K90D 16/12 (100 PCS)	E11KM-02030100800	25	7,0	10,0	20	17	18	25	M12	10	1	2	100	1.7
K90D 16/12 (10 PCS)	E11KM-02030100802								10				0.17	
K90D 25/6 (100 PCS)	E11KM-02030100900								100				1.7	
K90D 25/6 (10 PCS)	E11KM-02030100902					10	0.17							
K90D 25/8 (100 PCS)	E11KM-02030101000					100	1.7							
K90D 25/8 (10 PCS)	E11KM-02030101002					10	0.17							
K90D 25/10 (10 PCS)	E11KM-02030101102	20	18	16	26	17	19	26	M10	10	1	2	10	0.2
K90D 25/12 (100 PCS)	E11KM-02030101200								100				1.9	
K90D 25/12 (10 PCS)	E11KM-02030101202								10				0.19	

Type	Index Ergom	Cross section mm ²	d	D	a	E	W	H	Size of bolt dia	Die code No.	Lz/s	Lz/w	Quantity in package [pcs]	Weight [kg]			
K90D 35/8 (100 PCS)	E11KM-02030101310	35	8,2	12,5	20	19	17		M8	12	1	2	100	3.8			
K90D 35/8 (10 PCS)	E11KM-02030101312															10	0.38
K90D 35/10 (100 PCS)	E11KM-02030101400												19	27	M10	100	3.8
K90D 35/10 (10 PCS)	E11KM-02030101402												21			10	0.38
K90D 35/12 (100 PCS)	E11KM-02030101500													21	M12	100	3.7
K90D 35/12 (10 PCS)	E11KM-02030101502															10	0.37
K90D 50/8 (100 PCS)	E11KM-02030101600	50	10,0	14,5	28	20			M8	14	2	3	100	5			
K90D 50/8 (10 PCS)	E11KM-02030101602												22			10	0.5
K90D 50/10 (100 PCS)	E11KM-02030101700														M10	100	4.8
K90D 50/10 (10 PCS)	E11KM-02030101702												22			10	0.48
K90D 50/12 (100 PCS)	E11KM-02030101800													24	M12	100	4.4
K90D 50/12 (10 PCS)	E11KM-02030101802															10	0.44
K90D 50/16 (100 PCS)	E11KM-02030101900					25	28	M16	100	4.4							
K90D 50/16 (10 PCS)	E11KM-02030101902								10	0.44							
K90D 70/8 (100 PCS)	E11KM-02030102010	70	11,5	16,5	28	21			M8	16	2	3	100	6.5			
K90D 70/8 (10 PCS)	E11KM-02030102012															10	0.65
K90D 70/10 (100 PCS)	E11KM-02030102100														M10	100	6.7
K90D 70/10 (10 PCS)	E11KM-02030102102												24			10	0.67
K90D 70/12 (100 PCS)	E11KM-02030102200												23	37	M12	100	6.4
K90D 70/12 (10 PCS)	E11KM-02030102202															10	0.64
K90D 70/16 (100 PCS)	E11KM-02030102300					26	30	M16	100	5.7							
K90D 70/16 (10 PCS)	E11KM-02030102302								10								
K90D 95/10 (50 PCS)	E11KM-02030102500	95	13,5	19,0	35	25			M10	18	2	4	50	5			
K90D 95/10 (10 PCS)	E11KM-02030102502												28			10	1
K90D 95/12 (50 PCS)	E11KM-02030102600												26		M12	50	4.85
K90D 95/12 (10 PCS)	E11KM-02030102602															10	0.97
K90D 95/16 (50 PCS)	E11KM-02030102700												30	45	M16	50	4.9
K90D 95/16 (10 PCS)	E11KM-02030102702															10	0.98
K90D 95/20 (50 PCS)	E11KM-02030102800					32		M20	50	4.9							
K90D 95/20 (10 PCS)	E11KM-02030102802								10	0.98							
K90D 120/10 (50 PCS)	E11KM-02030102900	120	15,5	21,0	35	27			M10	20	2	4	50	6.6			
K90D 120/10 (10 PCS)	E11KM-02030102902															10	1.32
K90D 120/12 (50 PCS)	E11KM-02030103000												28		M12	50	6.4
K90D 120/12 (10 PCS)	E11KM-02030103002															10	1.28
K90D 120/14 (50 PCS)	E11KM-02030103100												32	47	M14	50	6.4
K90D 120/14 (10 PCS)	E11KM-02030103102															10	1.28
K90D 120/16 (50 PCS)	E11KM-02030103200					32		M16	50	6.35							
K90D 120/16 (10 PCS)	E11KM-02030103202								10	1.27							
K90D 120/20 (50 PCS)	E11KM-02030103300					34	38	M20	50	6.25							
K90D 120/20 (10 PCS)	E11KM-02030103302								10	1.25							
K90D 150/10 (50 PCS)	E11KM-02030103400	150	17,0	23,5	35	29			M10	22	2	4	50	9.5			
K90D 150/10 (10 PCS)	E11KM-02030103402															10	1.9
K90D 150/12 (50 PCS)	E11KM-02030103500												30	34	M12	50	9.3
K90D 150/12 (10 PCS)	E11KM-02030103502															10	1.86
K90D 150/16 (50 PCS)	E11KM-02030103600												34		M16	50	9.85
K90D 150/16 (10 PCS)	E11KM-02030103602															10	1.97
K90D 150/20 (50 PCS)	E11KM-02030103700					36	38	M20	50	9.25							
K90D 150/20 (10 PCS)	E11KM-02030103702								10	1.85							
K90D 185/12 (50 PCS)	E11KM-02030103800	185	19,0	25,5	40				M12	25	2	5	50	10.35			
K90D 185/12 (10 PCS)	E11KM-02030103802															10	2.07
K90D 185/16 (50 PCS)	E11KM-02030103900												35	37	M16	50	10.25
K90D 185/16 (10 PCS)	E11KM-02030103902															10	2.05
K90D 185/20 (50 PCS)	E11KM-02030104000												37	40	M20	50	10.25
K90D 185/20 (10 PCS)	E11KM-02030104002															10	2.05
K90D 240/12 (50 PCS)	E11KM-02030104100	240	21,5	29,0	40				M12	28	2	-	50	15.85			
K90D 240/12 (10 PCS)	E11KM-02030104102												37	42		10	3.17
K90D 240/16 (50 PCS)	E11KM-02030104200														M16	50	15.85
K90D 240/16 (10 PCS)	E11KM-02030104202															10	3.17
K90D 240/20 (50 PCS)	E11KM-02030104300												39	45	M20	50	15.85
K90D 240/20 (10 PCS)	E11KM-02030104302															10	3.17

Type	Index Ergom	Cross section mm ²	d	D	a	E	W	H	Size of bolt dia	Die code No.	Lz/s	Lz/w	Quantity in package [pcs]	Weight [kg]
K90D 300/16 (25 PCS)	E11KM-02030104400	300	24,5	32,0	40	38	48	67	M16	32	2	-	25	11.25
K90D 300/16 (10 PCS)	E11KM-02030104402												10	4.5
K90D 300/20 (25 PCS)	E11KM-02030104500					40			M20				25	11.43
K90D 300/20 (10 PCS)	E11KM-02030104502												10	4.58

Lz/s - No. of crimping - wide Lz/w - No. of crimping - narrow