

# MONITORING OF THE ELECTRICAL INFRASTRUCTURE

SYSTEM SOLUTION FOR ELECTRICAL NETWORKS





High quality artwork for an optimised HMI experience and full functionality



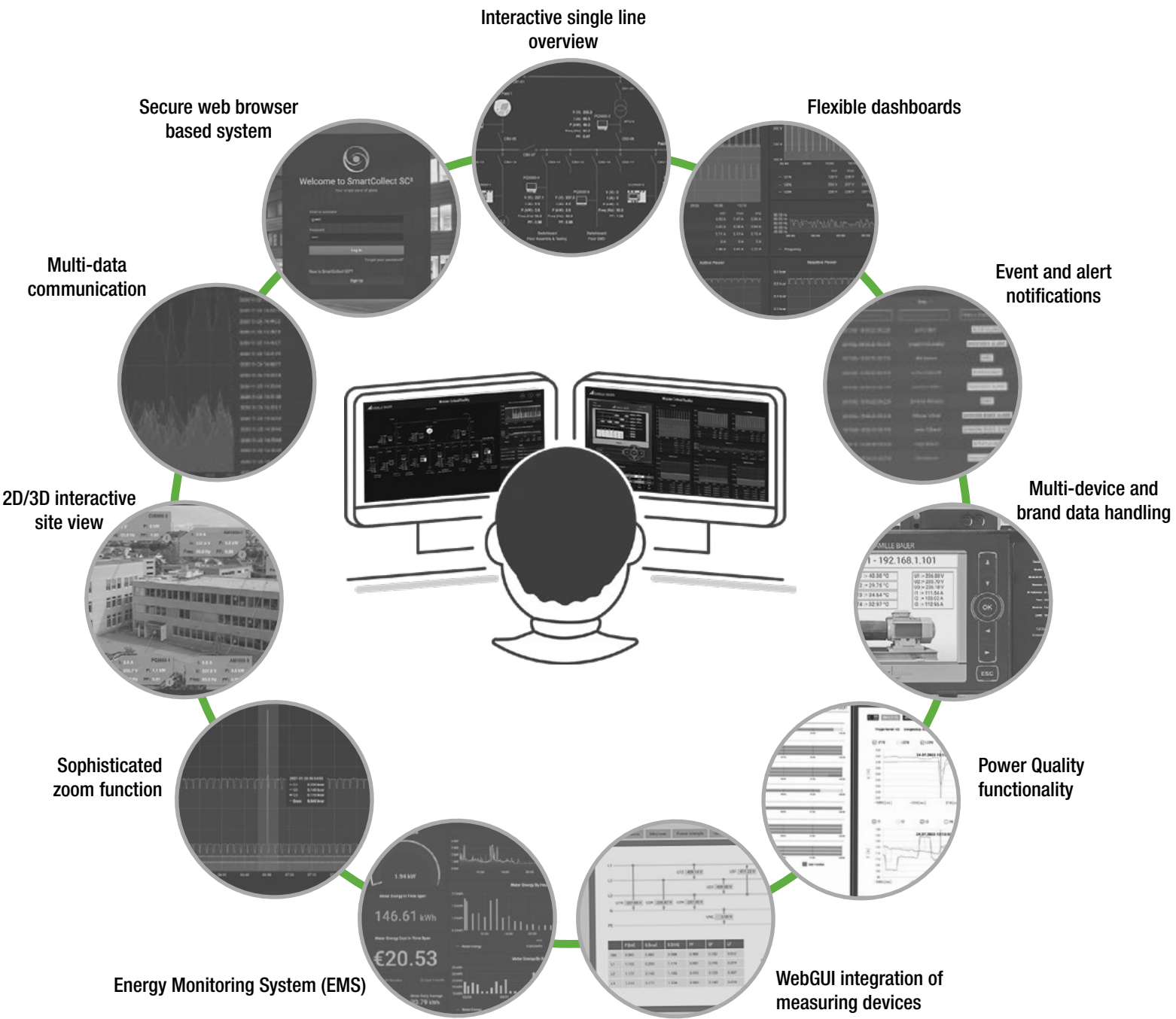
To see the benefits for yourself, visit our live page:  
[www.scada-smartcollect.com](http://www.scada-smartcollect.com)

Please ask for a demo access at:  
[info@scada-smartcollect.com](mailto:info@scada-smartcollect.com)



**SIMPLICITY AND USER FRIENDLINESS ARE THE KEY**

# SMARTCOLLECT® SC<sup>2</sup> SYSTEM OVERVIEW



SMARTCOLLECT® SC<sup>2</sup> is a scalable HMI/SCADA software for the visualization of electrical distribution and other physical parameters. Unlike other SCADA software, SMARTCOLLECT® SC<sup>2</sup> is built on a new,

ultra-modern platform with a visually pleasing 2D/3D web-based graphical user interface. Powerful communications and software interfaces, expansion options, ease of use and an affordable price are just some of the other

user benefits of SMARTCOLLECT® SC<sup>2</sup>. Just one look at SMARTCOLLECT® SC<sup>2</sup> makes you wonder how you used anything else before.



# CONSCIOUS SIMPLICITY

## Interactive single line overview

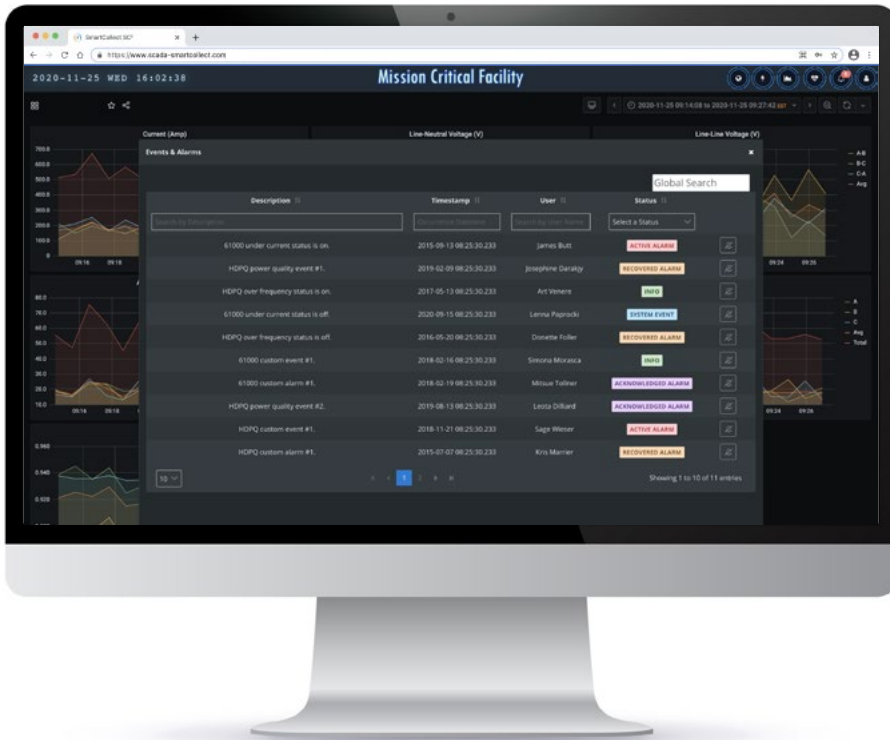
Permanent monitoring of all integrated circuits in the infrastructure with a brief overview of instantaneous measurement values. The single line overview is a customized function that is based on the individual application design.



## Flexible dashboards

The modern dashboard displays all the necessary information with high fidelity for relevant and critical measures. The data design is customized based on the application and user demand while remaining flexible for future adjustments.





### Event and alert notifications

The software has different options for event and alert notifications. For power quality event notifications, details can be read out at standard level for Camille Bauer devices from the integrated webGUI. Status, event and warning messages can be output both visually (e.g. traffic lights, etc.) and acoustically (e.g. internal PC loudspeaker, external signal) or also be issued by e-mail.

### Multi-device and brand data handling

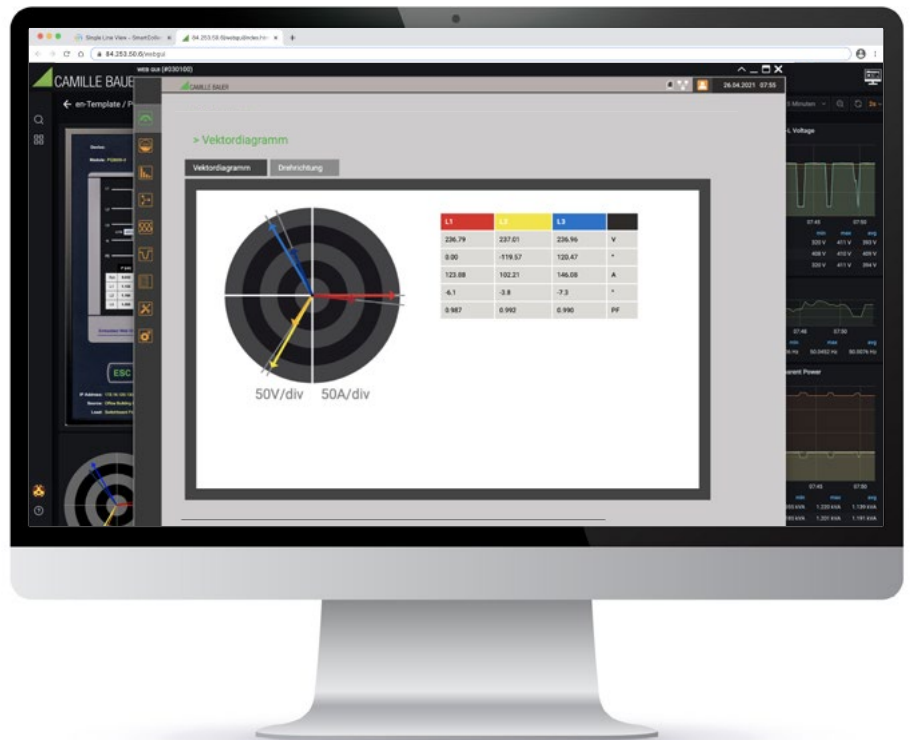
The software links with multiple devices and can integrate different measurement devices and sensors of any brand. In addition, other data beside physical parameters can be displayed, including virtual channels.



# CONSCIOUS SIMPLICITY

## Individual WebGUI integration

The software supports individual integration of device WebGUIs. This gives the user access to additional information and remote configuration options, depending on the device.



## Energy Monitoring System (EMS)

The high degree of data acquisition allows full transparency of energy data. For analytic purpose (e.g. reducing CO<sub>2</sub> emission, increasing energy efficiency as well to evaluate potential saving) the EMS supports different panel views inside the EMS dashboard. Various manual or automatic reporting functions supports the individual business intelligence.



### Sophisticated zoom function

The dashboard can be used for deep analysis with the zoom function. In the dashboard overview the zoom will synchronize all parameters so that all associated parameters can be viewed in relation to the zoomed-in data.

### Interactive 2D/3D aerial view

The main feature of the aerial view is the use of an image of the site(s) as the background. Brief info boxes point to locations where the measuring devices are situated. The info box has a specific name and contains a brief overview of the instantaneous measurement values

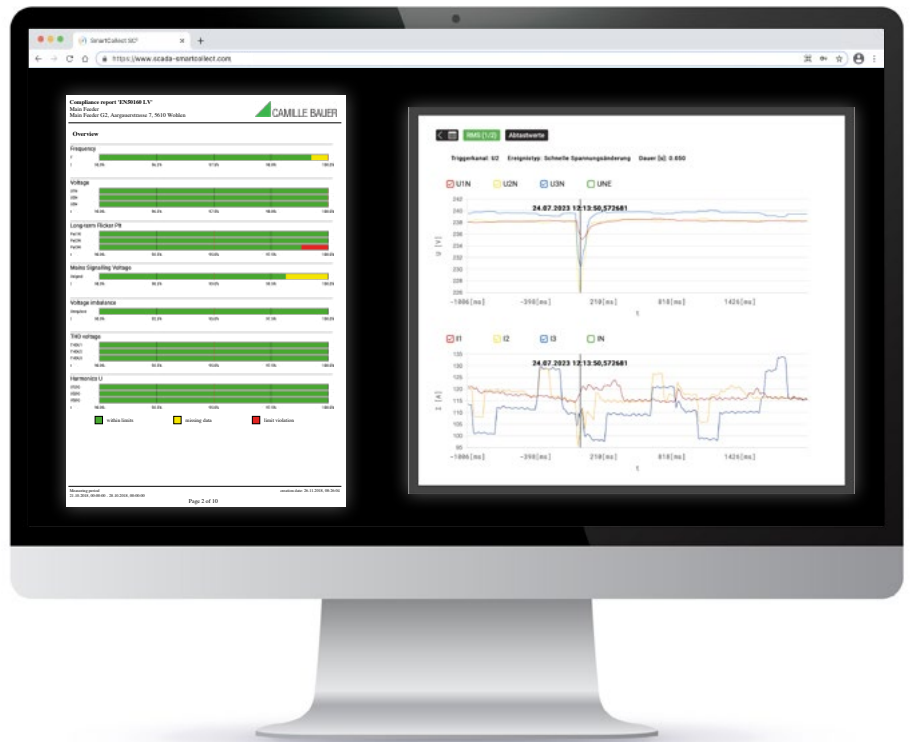




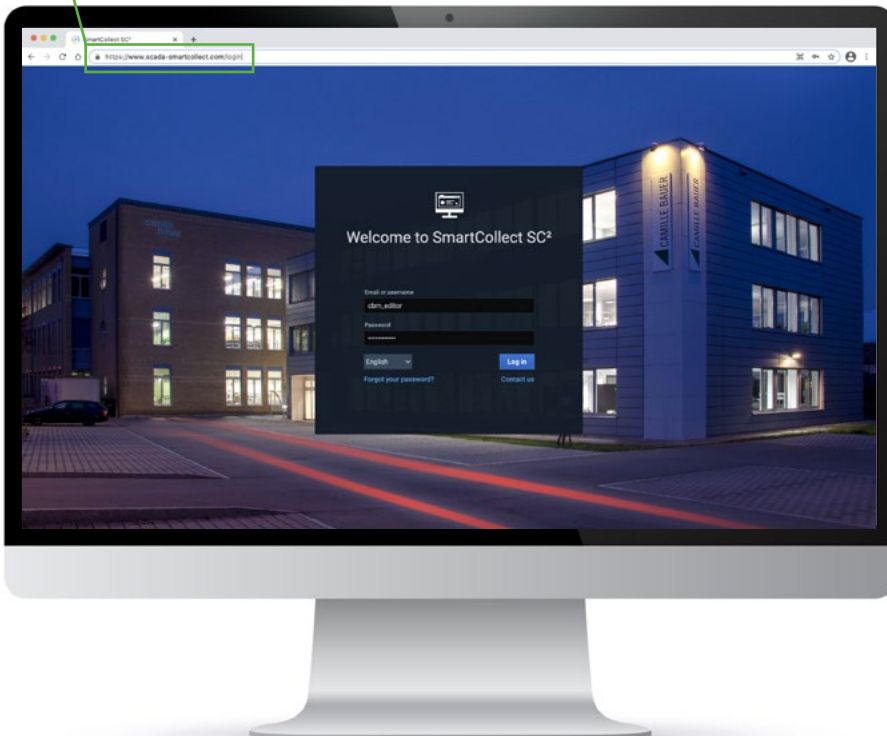
# CONSCIOUS SIMPLICITY

## PQEasy functions

The software offers so called PQEasy functions to register, visualize and analyze events. In addition, conformity reports, e.g. EN50160, GB/T, IEEE519, etc. can be generated.



<https://www.scada-smartcollect.com/login>

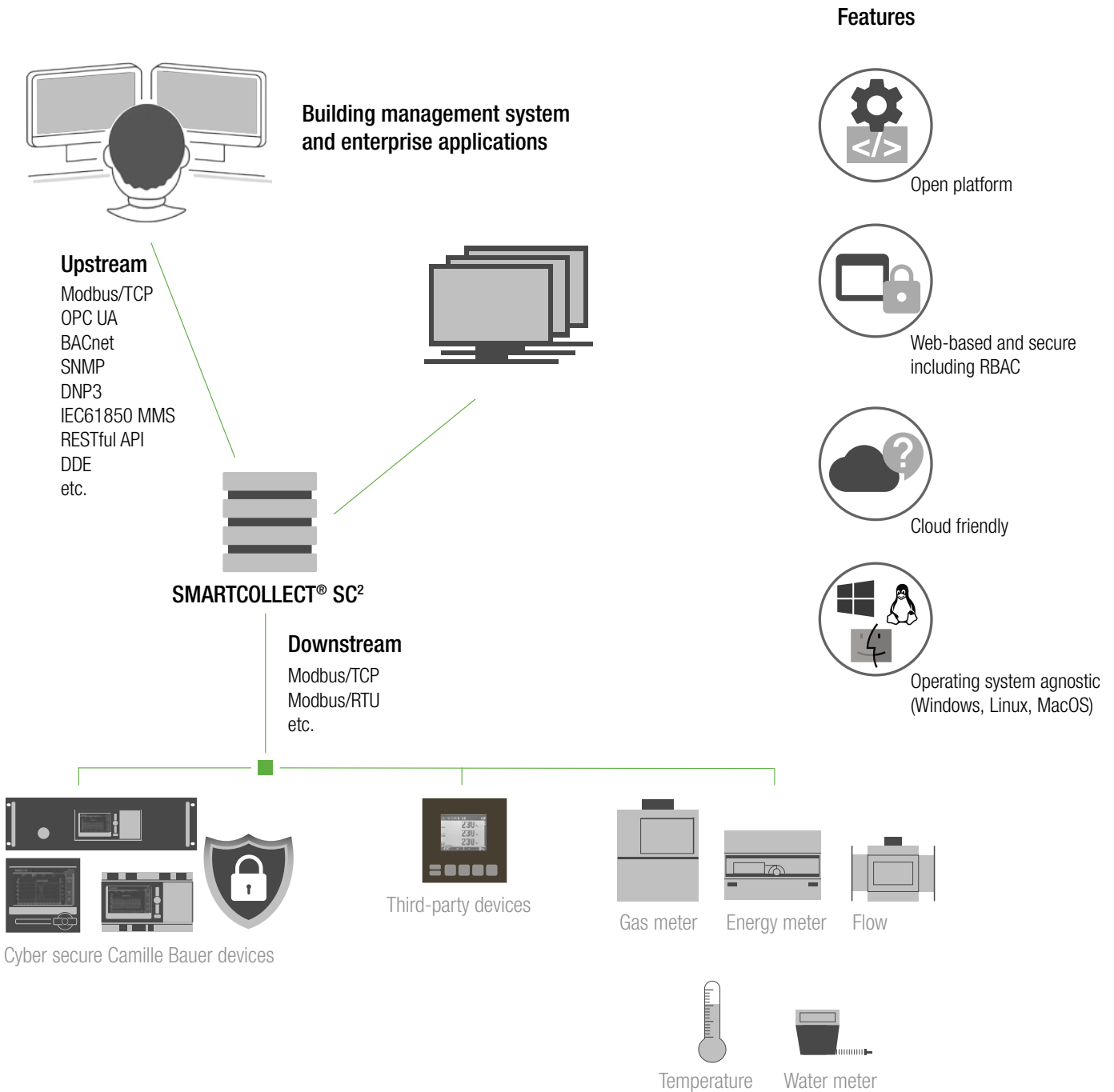


## Secure web-based system

The software is based on a modern and intuitive secure web application compatible with most common web browsers. The application needs no specific client software and runs on most common operating systems (OS) such as Microsoft Windows, Linux and MacOS, and provides intuitive cloud support.



# SYSTEM MODE (SINGLE LOCATION / INSTANCE)

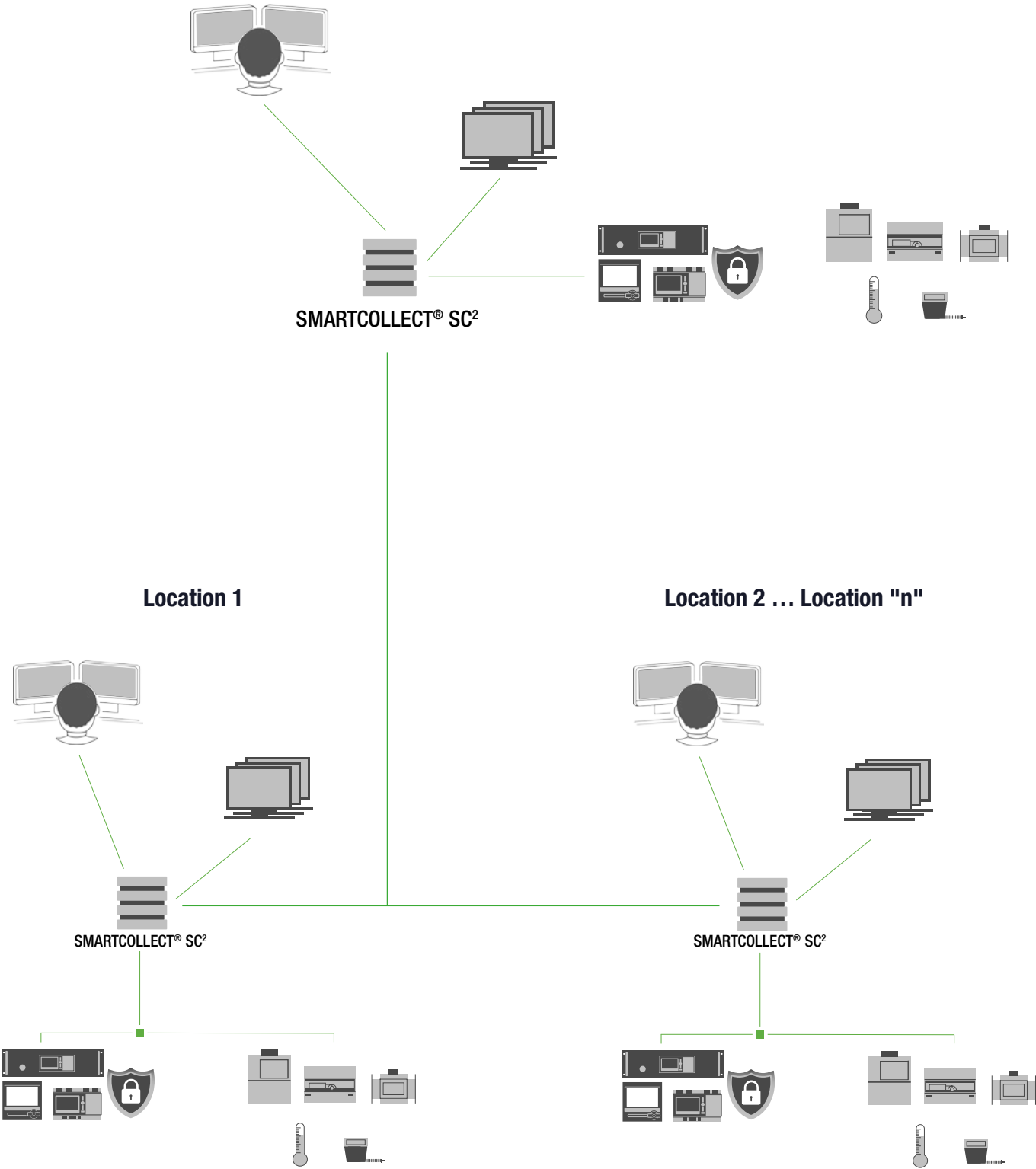


RECOMMENDED SYSTEM REQUIREMENTS:	SYSTEM	CPU	MEMORY	HARD DISK	SCREEN RESOLUTION	BROWSER *
<b>Starter Edition</b>	Windows 10 x64	2 CPU cores	4GB (+4GB with EMS)	250GB	1920x1080	Google Chrome, Mozilla Firefox, Apple Safari, Microsoft Edge
<b>Standard Edition</b>			12GB (+4GB with EMS)	500GB		
<b>Professional Edition</b>		4 CPU cores	20GB (+4GB with EMS)	1TB		
<b>Enterprise Edition</b>						

\* **Attention:** Please always use latest browser version. Sometimes browser negatively influences the software performance. In case of performance issues please check for a newer version of your browser or try another browser.

# SYSTEM MODE (MULTIPLE LOCATIONS / INSTANCES)

Main Monitor (HQ) for Location 1 ... Location "n"

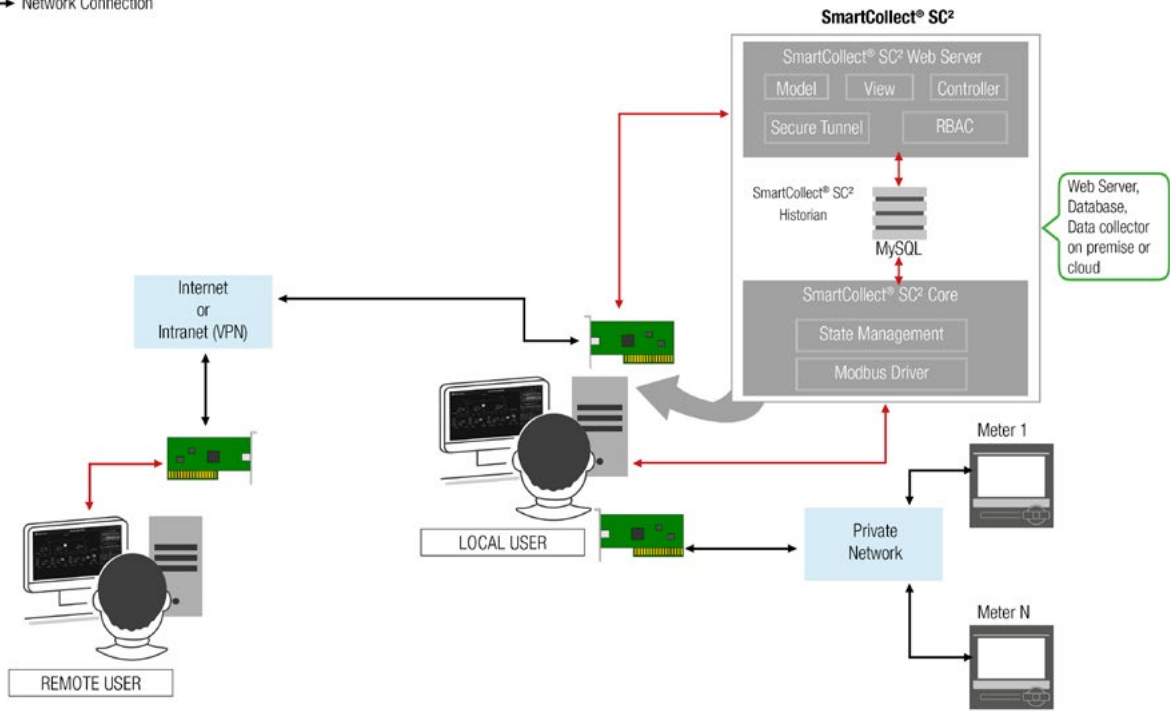


# INSTALLATION SCENARIOS

**COLOR LEGEND**

- Software Connection
- Network Connection

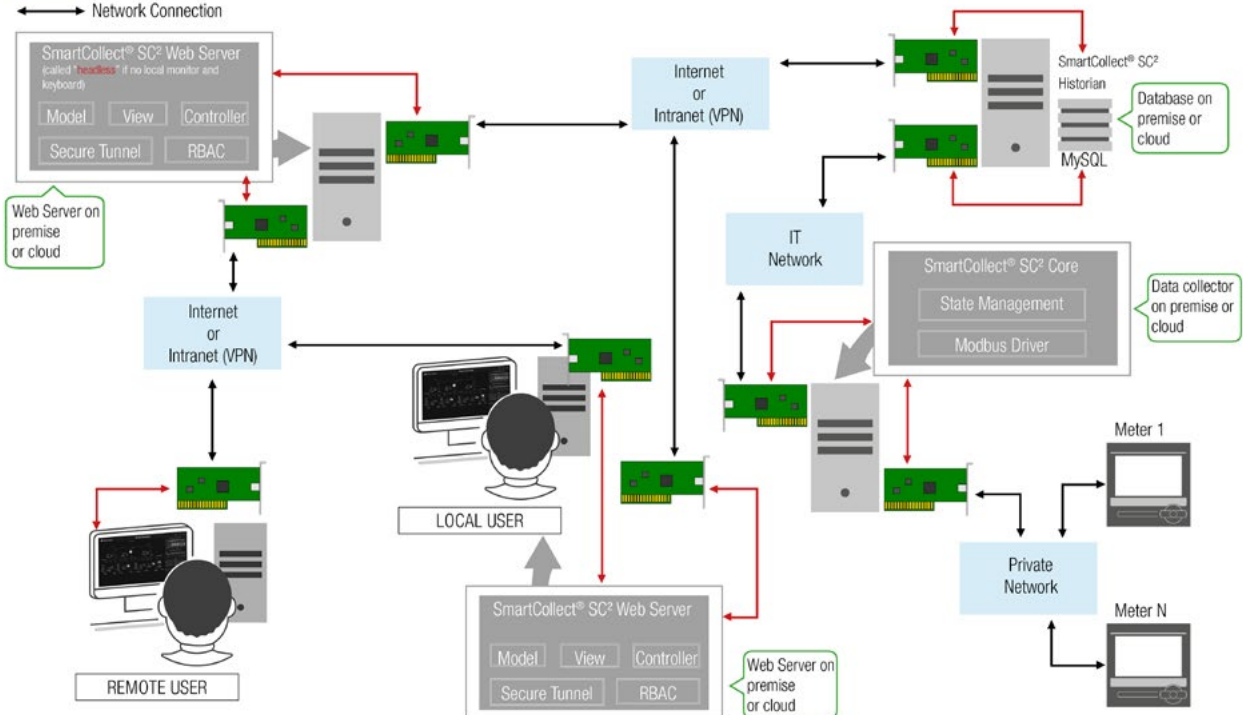
## Single Node Installation



## Distributed Installation

**COLOR LEGEND**

- Software Connection
- Network Connection



# OVERVIEW OF SMARTCOLLECT® SC<sup>2</sup> VERSIONS

Possible system functions	Starter Edition	Standard Edition	Professional Edition	Enterprise Edition	Smart Grid Pilot Edition <sup>(1)</sup>
<b>Communication driver upstream all server variants</b>					
Modbus/TCP Server <sup>(3)</sup>			✓	✓	
OPC UA/DA Server			✓	✓	
BACnet Server			✓	✓	
SNMP Server			✓	✓	
DNP3 Server			✓	✓	
IEC60870-5-104			(4)	(4)	
IEC61850 MMS Server			✓	✓	
RESTful API Server			✓	✓	
DDE Server			✓	✓	
<b>Communication driver downstream all client variants</b>					
Modbus/TCP Client <sup>(2)</sup>	✓	✓	✓	✓	✓
Modbus/RTU over TCP Client <sup>(2) (4)</sup>		✓	✓	✓	
M-Bus Client over RS-485 or Ethernet			✓	✓	
OPC UA/DA Client			✓	✓	
BACnet Client			✓	✓	
SNMP Client			✓	✓	
DNP3 Client			✓	✓	
IEC60870-5-104			(5)	(5)	
IEC61850 MMS Client			✓	✓	
RESTful API Client			✓	✓	
DDE Client			✓	✓	
Smartcontrol Client (multifunctional datalogger)			✓	✓	
RESTful API Client LINAX PQ3K / PQ5K			✓	✓	
<b>Feature component</b>					
Login screen	✓	✓	✓	✓	✓
Interactive one-line (single line) with live data overlay (SLD)	✓	✓	✓	✓	✓
Display details measuring devices <sup>(18)</sup>	✓	✓	✓	✓	✓
Measuring device webgui view <sup>(6)</sup>	✓	✓	✓	✓	✓
Event/alert screen	✓	✓	✓	✓	✓
Role-based access control (RBAC)	✓	✓	✓	✓	✓
Two-factor authentication			(5)	(5)	
Internationalization <sup>(7)</sup>	✓	✓	✓	✓	✓
HTML online help	✓	✓	✓	✓	✓
Flexible dashboards <sup>(8)</sup>		✓	✓	✓	
3rd-party device integration <sup>(9)</sup>		✓	✓	✓	
3rd-party web app (WebGUI) embedding			✓	✓	
Manually export dashboard/report data as CSV <sup>(10)</sup>	✓	✓	✓	✓	✓
2D-Management View (Areal View)		✓	✓	✓	
3D-Management View				✓	
Interactive one-line (single line) with live animation <sup>(12)</sup>			✓	✓	
2D imagery background with live animation <sup>(12)</sup>			✓	✓	
E-mail notification „Standard“	✓	✓	✓	✓	✓
E-mail notification „Enterprise“ <sup>(16)</sup>				✓	
Export Selected Data to CSV (auto mode)				✓	
SMS notification			(5)	(5)	



Possible system functions	Starter Edition	Standard Edition	Professional Edition	Enterprise Edition	Smart Grid Pilot Edition <sup>(1)</sup>
CAD import (z. B. dwg, dxf ...)			✓	✓	
Task scheduler <sup>(17)</sup>			(5)	(5)	
<b>EMS (Energy Monitoring System) <sup>(19)</sup></b>					
Flexible Dashboards		✓	✓	✓	
Energy Monitoring System (EMS) Screen	✓	✓	✓	✓	
Energy Monitoring System (EMS) PDF Reporting manual		✓	✓	✓	
PDF Reporting automation (Scheduler & E-Mailing)			✓	✓	
PDF Layout Custom Design Engineering				✓	
<b>Power Quality (PQEasy functions)</b>					
Summary PQ Event Notification <sup>(11)</sup>	✓	✓	✓	✓	✓
LINAX PQ Event driver			✓	✓	
LINAX PQEasy Report driver			✓	✓	
LINAX PQDIF File driver			✓	✓	
Plugin PQDIF Explorer (web based)				✓	
Converter PQDIF to CSV				✓	
Converter COMTRADE to CSV				✓	
<b>Architecture/technology</b>					
Browser-server (BS)	✓	✓	✓	✓	✓
HTTPS	✓	✓	✓	✓	✓
Secure WebSocket (wss)	✓	✓	✓	✓	✓
HTML5/CSS3	✓	✓	✓	✓	✓
SVG	✓	✓	✓	✓	✓
WebGL (3D)				✓	✓
<b>Operating system</b>					
Windows 7 SP1 and above	✓	✓	✓	✓	✓
MacOS			✓	✓	
Linux		✓	✓	✓	
<b>Deployment/installation</b>					
On Premise on customer system (server, PC, etc.)	✓	✓	✓	✓	✓
Cloud (Virtual Server, e.g. MS Azure, Google Cloud, Amazon AWS, custom, etc.)			✓	✓	✓
<b>Database integration</b>					
TDengine time series database client for downstream (TSDB integrated standard database)	✓	✓	✓	✓	✓
TDengine time series database server for downstream and upstream (TSDB)		✓	✓	✓	
MySQL client for downstream	✓	✓	✓	✓	✓
MySQL server for downstream and upstream				✓	
Microsoft SQL client for downstream				✓	
Microsoft SQL server for downstream and upstream				✓	
PostgreSQL client for downstream				✓	
PostgreSQL server for downstream and upstream				✓	
<b>Ad-hoc features</b>					
Retrieving, archiving and displaying device's local Data recording / Event log / Waveform capture <sup>(13)</sup>				✓	

Possible system functions	Starter Edition	Standard Edition	Professional Edition	Enterprise Edition	Smart Grid Pilot Edition <sup>(1)</sup>
<b>I/O tags <sup>(14)</sup></b>					
≤ 250 <sup>(6)</sup>	✓ <sup>(15)</sup>				fix
Tier 1 < 500		✓	✓		
Tier 2 < 2,500			✓		
Tier 3 < 5,000				✓	
Tier 4 > 5,000				✓	
<b>Diagnose</b>					
Integrated Health Check on SMARTCOLLECT® SC²: a) Integrated service checker (same machine as SmartCollect® SC² is installed)	✓	✓	✓	✓	✓
Independent Health Check on SMARTCOLLECT® SC²: b) Option of independent hardware and software solution (incl. separate computer, e.g Intel® NUC Mini PC)			✓	✓	
Independent Health Check on SMARTCOLLECT® SC²: c) Option of independent software solution only (separate computer provided by the customer)			✓	✓	
Independent Health Check on SMARTCOLLECT® SC²: d) Option of independent Cloud solution			(5)	(5)	

- ✓ always inclusive
- ✓ optional Available

<sup>(1)</sup> 3 months license, 6 months license or unlimited. Incl. 1 LINAX® PQ5000CL or 2 LINAX® PQ5000CL

<sup>(2)</sup> also known as Modbus Master. To read data from devices via Modbus protocol

<sup>(3)</sup> also known as Modbus Slave. To feed data to other hosts via Modbus protocol

<sup>(4)</sup> also known as Modbus Encapsulated TCP. To read a Modbus/RTU device behind a device server via a generic TCP connection

<sup>(5)</sup> On request

<sup>(6)</sup> Camille Bauer products when available and exclusively via https

<sup>(7)</sup> The GUI will use not more than one language of customer's choice

<sup>(8)</sup> excl. SLD and Area View

<sup>(9)</sup> Foreign 3rd-party brands on request

<sup>(10)</sup> For individual graphics

<sup>(11)</sup> For connected LINAX PQXXX devices, PQ events are listed and can only be read out and analysed from the Measuring device web page or by means of external software

<sup>(12)</sup> Changing the color of lines/shapes based on values, blinking texts/lines/shapes based on values, fill color in shapes to certain level based on values, rotation of shapes (like the phasor diagram), Switch positions, etc.

<sup>(13)</sup> Customer to provide sample device and documentation. Extra 4-8 weeks R&D

<sup>(14)</sup> Tag = visual value point on the GUI, e. g. U1 = 1 tag, I1 = 1 tag, 1 virtual channel = 1 tag, etc.

<sup>(15)</sup> Support for up to 10 devices, with each device having the following maximum 25 tags fixed:

- I1, I2, I3, Iavg
- U1N, U2N, U3N, Unavg
- P1, P2, P3, Ptotal
- Q1, Q2, Q3, Qtotal
- S1, S2, S3, Stotal
- PF1, PF2, PF3, Pftotal
- Frequency

<sup>(16)</sup> Notification system in case of complex infrastructures (aggregation of notifications as well as reduction of individual messages)

<sup>(17)</sup> "Task scheduler" module in which user can define schedules/conditions (with duration) and actions. The "actions" part can include highly customized business logics

<sup>(18)</sup> Only Camille Bauer

<sup>(19)</sup> Also available stand-alone

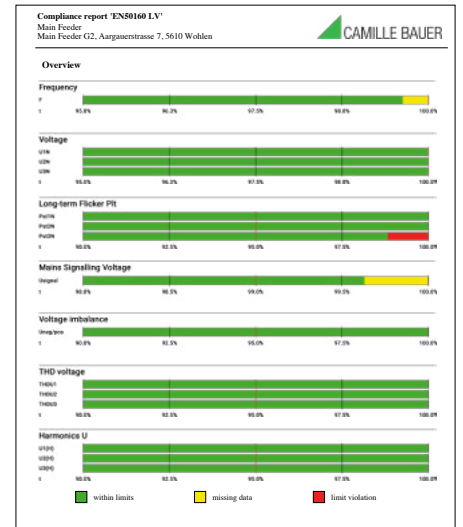
If you have a request concerning a feature that is not listed here, please contact Camille Bauer Metrawatt AG

# POWER QUALITY FUNCTIONALITY

The **LINUX PQ Event driver** reads (at a configurable interval) the PQ event list of each LINUX PQ measuring device via its REST interface and then stores the PQ events in a special table in the SC2 Historian database. It also reads RMS1/2 records of each event and stores them in a special table within the SC2 Historian database. In the SC2 Viz Web GUI, the user can browse all PQ events and view the RMS1/2 records of each event.

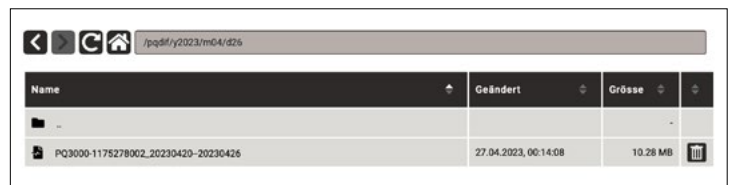


The **LINUX PQEasy Report driver** sends requests to the LINUX PQ meter via its REST interface to generate a compliance report on demand. The driver works in conjunction with the SC2 Viz Web GUI. On the SC2 Viz Web GUI, the user first selects a LINUX PQ meter, specifies the type of PQ report from a drop-down list, and selects a time period. After that, the report is created.



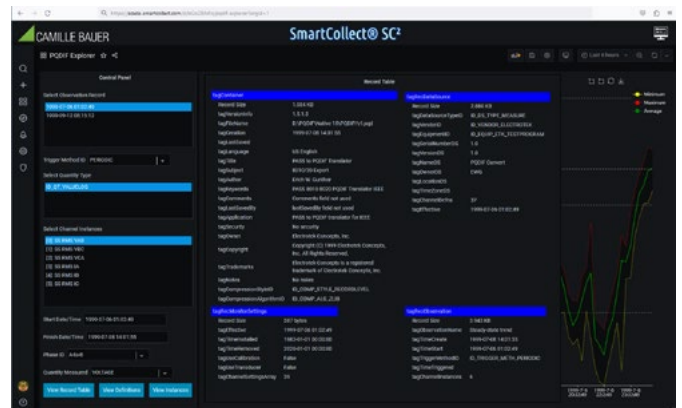
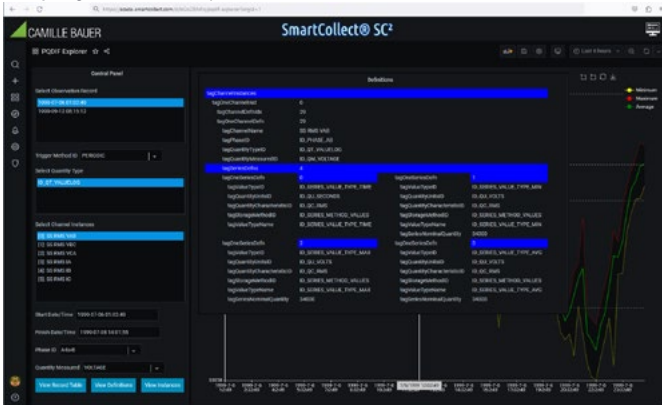
Conformity report e.g. according to EN50160

The **LINUX PQDIF driver** reads (at a configurable interval) PQDIF files of each PQ instrument via its REST interface and then downloads these files to the SC2 folder. In the SC2 Viz web GUI, the user can browse this SC2 folder and download the selected PQDIF file(s) and then analyze them with external software or with the SMARTCOLLECT® SC² Plugin PQDIF Explorer.



PQDIF Download

## Analyzing with PQDIF Explorer



# EXAMPLES OF EMS DASHBOARDS



Display with Sankey diagram and active power graph



Instantaneous values with alert line



Heatmap for displaying the utilization over time



Graphics for individual measurement locations, incl. aggregation of measurement locations via time variable

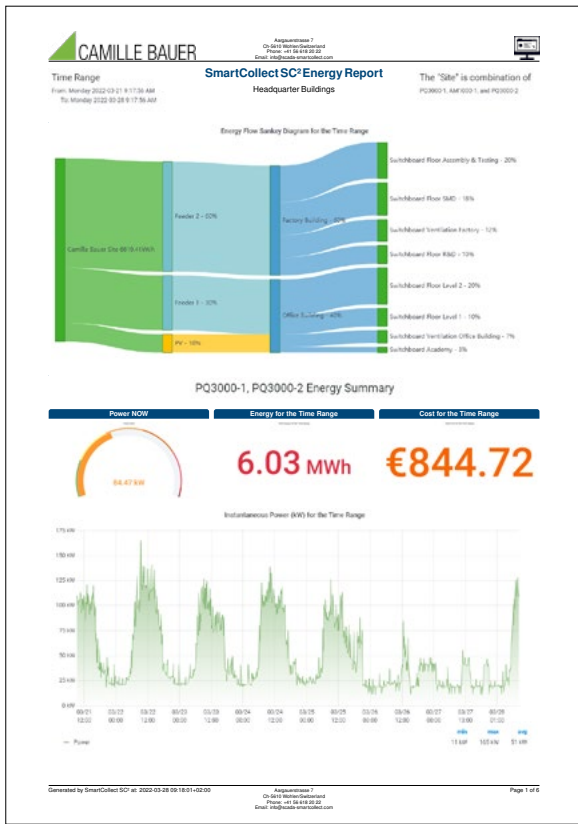


Graphics for evaluations over day, month and years

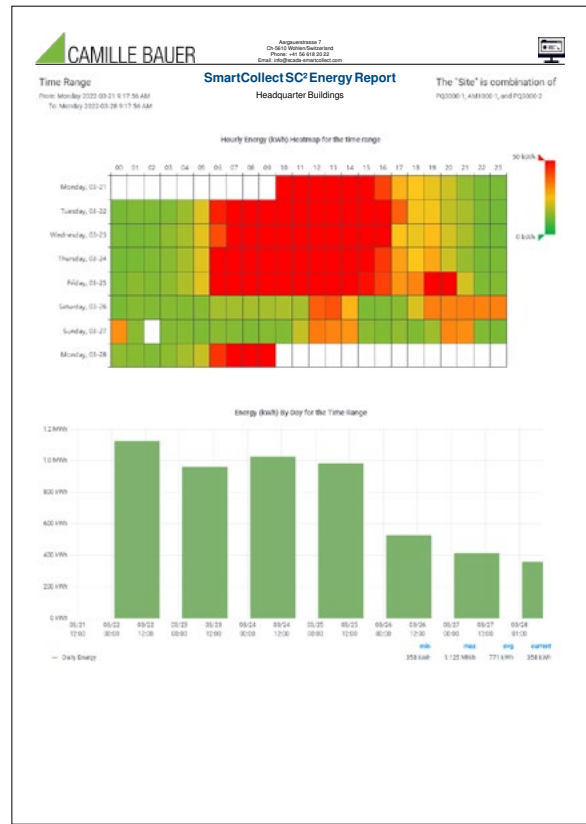


# EXAMPLES OF ENERGY REPORTS

The reports reflect the same data from the dashboard in the form of a PDF. The reports can be generated either manually or via a scheduler.



Energy flow Sankey diagram and instantaneous values of active power for the selected time range



Hourly energy (heatmap) and daily energy for the selected time range



Daily energy for the month and monthly energy for the year



# MEETING ENERGY MANAGEMENT STANDARDS

SMARTCOLLECT® SC<sup>2</sup> with EMS can meet the following criteria: <sup>(1)</sup>

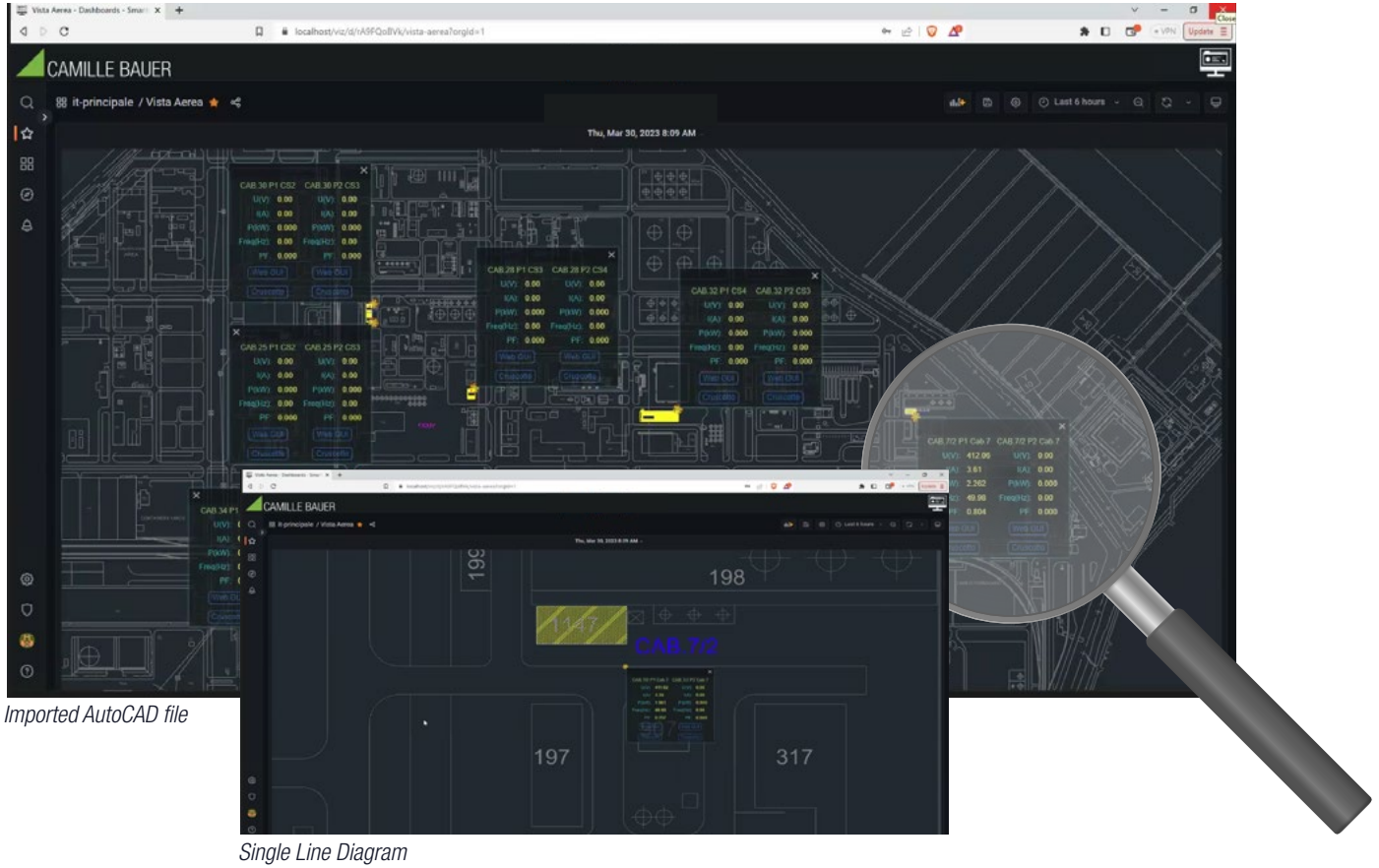
Area	Subsection	Criterion
Data evaluation	Output mathematical quantities	Summations
		Mean values
		Extreme values
	Formation of key figures	Energy consumption (absolute)
		Specific energy consumption
		Power consumption per reference variable
		Fuel consumption per reference size
	Temporal resolution of the data	Predetermined time intervals
		Freely definable
	Cost determination	Energy tariff input function
Cost center assignment		
Visualization	Diagrams	Line diagram (hydrograph)
		Bar diagram
		Sankey diagram
	Individual chart customization	Free choice of time resolution
		Showing limit values
Reporting	General energy areas	Scheduled reports (e.g. monthly report)
		Presentation of long-term and short-term consumption development
		Dispatch of reports using digital media
		Output in common format (e.g. PDF / Word)
Alarms	Early warning mechanism	Individual definition of threshold values
		Automatic alarm when threshold values are exceeded
		Transmission of the alarm by means of digital media
Integration into existing systems	Software	Data import for the integration of any measurement data
		Data export to common Office formats (e.g. .xls, .csv)
		Generation data point list
	Control technology	Building management system (BMS)
		Process control technology (PCT)
Other	Support	Support for problems
		Employee training
		Software setup
		Updateservice

<sup>(1)</sup> for an additional charge

# CAD IMPORT

## AutoCAD data import

SMARTCOLLECT® SC<sup>2</sup> is able to read and process AutoCAD data directly.



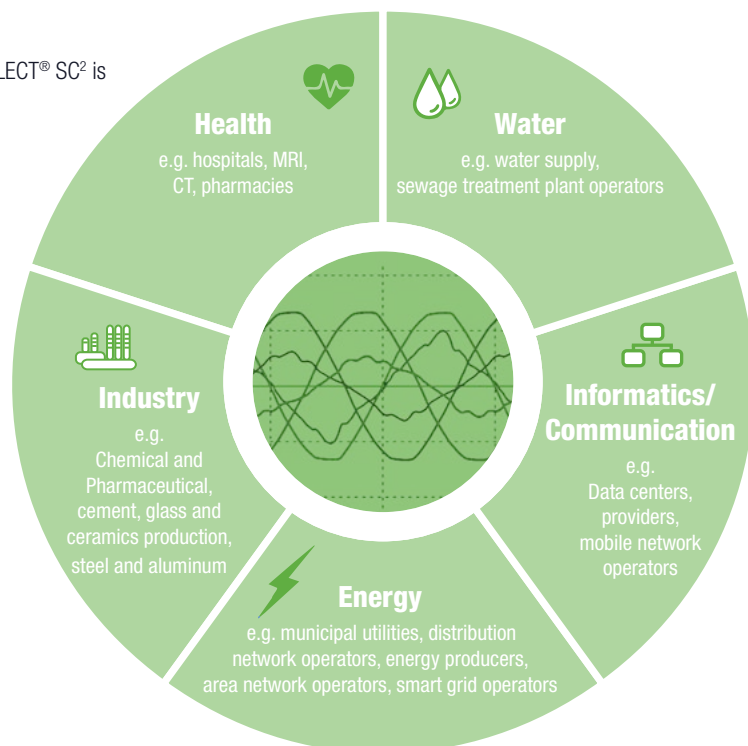
Imported AutoCAD file

Single Line Diagram

# SEGMENTS

## Core segments of the SMARTCOLLECT® SC<sup>2</sup>

In addition to the segments mentioned above, the SMARTCOLLECT® SC<sup>2</sup> is also open for other segments and specific applications.





**CAMILLE BAUER**

GMC-INSTRUMENTS GROUP

Camille Bauer Metrawatt AG  
Aargauerstrasse 7 ■ 5610 Wohlen ■ Switzerland  
TEL +41 56 618 21 11

[www.camillebauer.com](http://www.camillebauer.com) ■ [sales@camillebauer.com](mailto:sales@camillebauer.com)