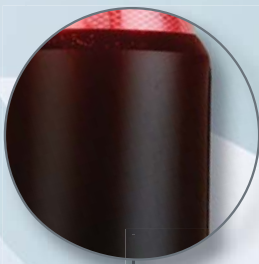


# OBSTA HISTI 110 to 240 VAC

The OBSTA HI STI is devoted to the marking of all kinds of obstacles such as buildings, airports, broadband towers, high voltage power poles.

One model allow can cover every voltage from 110VAC up to 240VAC

In intense electromagnetic fields ( radiant poles, multi directional radio antennas), it is recommended to use the OBSTA HI STIM code 13150.



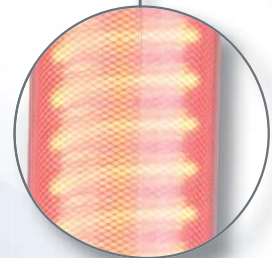
### One-piece molded

- perfectly waterproof
- no grounding issue
- all wiring configuration available
- no rise from the ground potential (due to lightning for example)
- increased reliability



### Power cable

- 110 VAC up to 240 VAC
- protected against transient overvoltages
- alarm relay in case of lamp failure or low power



### Neon light

- 13 turns
- hard glass cover and tube
- «aviation » red color
- very long life expectancy in all climatic environment
- great light efficiency
- luminosity substantially higher than what is recommended by ICAO and FAA
- low power consumption

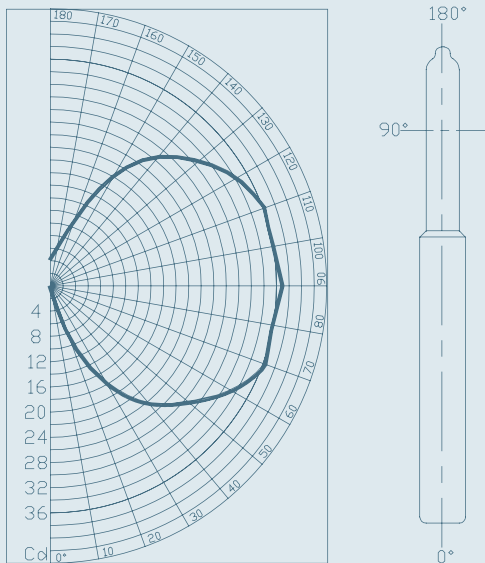
## MAIN CHARACTERISTICS

OBSTA part number	Power supply	Luminous intensity	Current consumption	Nominal power	Theoretical lifetime (without any light decrease*)
HISTI ref. 13110	from 110 V eff. up to 240 V 50/60 Hz	> 32.5 Cd	110V - 730 mA 240 V - 370 mA	45 W	10 years

\* with power supply stabilized

## ADDITIONAL FEATURES

### LIGHT INTENSITY DIAGRAM

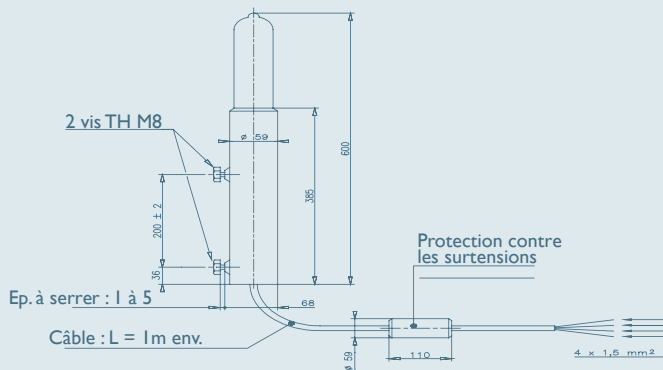


HISTI	
IP degree	66
Operating temperature	-30° + 60°C
Power supply voltage	from 110 up to 240V (+/-10%) 50/60 Hz
Weight	2.3 kg
Attachment	2 screws type M8 (provided) Thickness to screw into : 1 up to 5 mm
Wiring	On stripped wires (2 power wires, 2 alarm wires)

### SPECIAL PRECAUTIONS

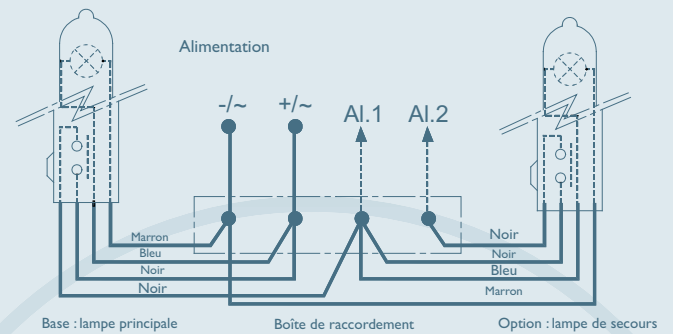
For chimney installation, install the light under the top (1.5 to 3m, 5 to 10ft), as per ICAO and FAA recommendations.  
For installation in intense electromagnetic fields, the use of shielded wire is highly recommended.

### DIMENSIONS (in mm)



### OTHER FUNCTIONS

- Failure remote signalization by relay (see diagram)



- «Active redundancy» configuration allows the automatic turn on of a backup light and/or of an alarm in case of failure of the main light (see diagram)  
- Photocell controlled  
- Light shielded as per standard EN 55011, class B

- Junction box (ref. 13140)
- Stainless steel mounting bracket (ref. 13121 for one light and 13124 for two lights)
- Solar generator (see page 40)
- Connection accessories (see page 28)

